

Specifications



CORNWALL FREESTANDING TUBS

Product Features

- Constructed of acrylic
- Seamless 1-piece
- Self-leveling feet simplify installation
- White linear overflow plate
- Integral overflow drain
- White toe-tap drain included
- Center drain
- Ample space for deck mounting a filler
- cUPC/IAPMO listed
- 24° degree lumbar support degree lumbar support
- PFFS05931WH Water capacity: 58 gal (220 L)
- PFFS06731WH Water capacity: 70 gal (265 L)



Optional accessories

PF651PVC PVC FS tub drain rough-in kit

PFFS05931WH

Model Numbers:

PFFS05931WH 59" x 31-1/2" x 23-5/8"

PFFS06731WH 67" x 31-1/2" x 23-5/8"

Warranty and Codes

This product comes complete with installation, operating, care and maintenance instructions.
This PROFLO product carries a 5-year limited warranty.

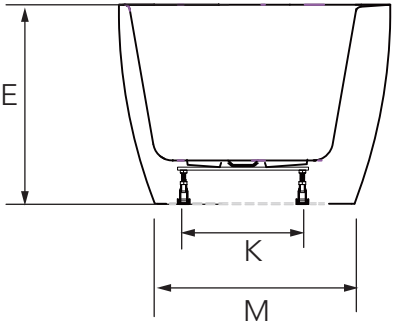
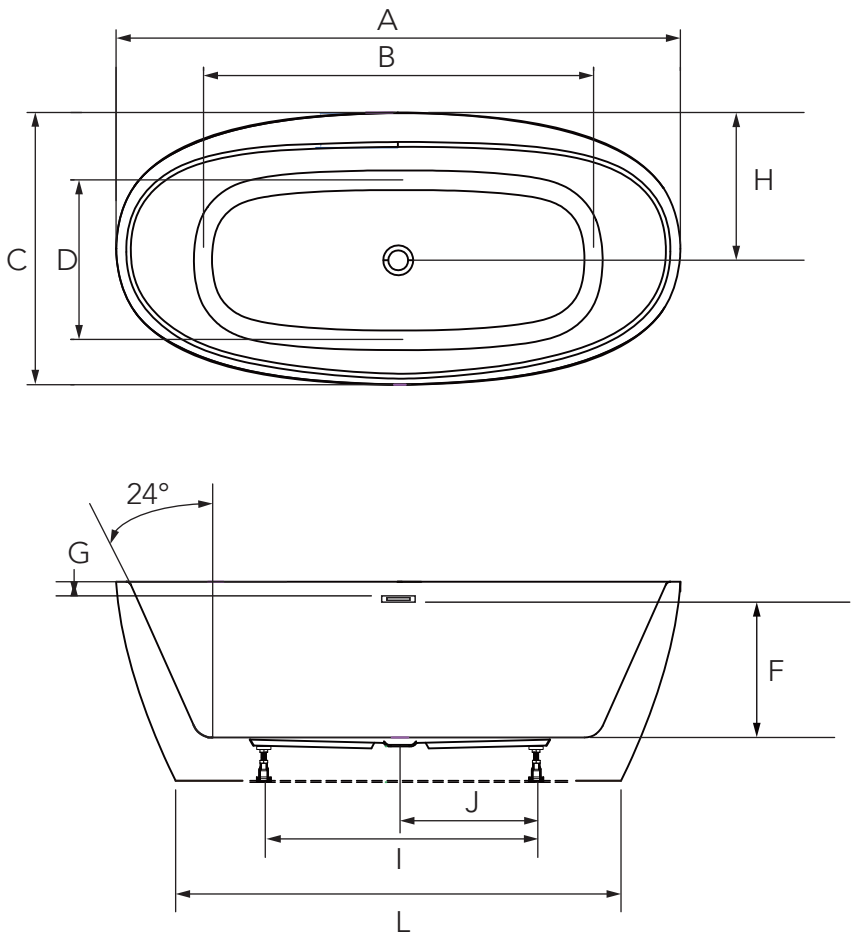




CORNWALL FREESTANDING TUBS

Product Specifications

Dimension/ Models	A	B	C	D	E	F	G	H	I	J	K	L	M
PFFS05931WH	59"	39-3/8"	31-1/2"	20"	23-5/8"	14-3/4"	3"	17-1/4"	32-1/4"	16-1/8"	14-1/8"	44-7/8"	23-5/8"
	1500mm	1000mm	800mm	510mm	600mm	375mm	75mm	440mm	820mm	410mm	360mm	1140mm	600mm
PFFS06731WH	67"	47-1/4"	31-1/2"	20"	23-5/8"	14-3/4"	3"	17-1/4"	32-1/4"	16-1/8"	14-1/8"	52-3/4"	23-5/8"
	1700mm	1200mm	800mm	510mm	600mm	375mm	75mm	440mm	820mm	410mm	360mm	1340mm	600mm



NOTE: All dimensions and specifications are nominal and may vary ±1/4".Use actual products for accuracy in critical situations.

